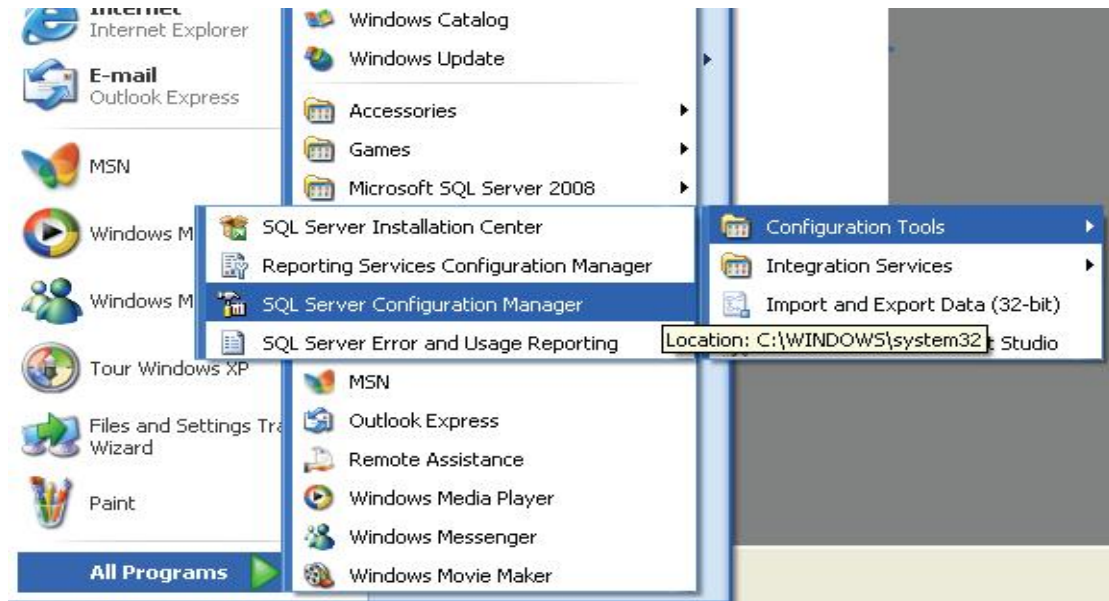


# Softwater configuration

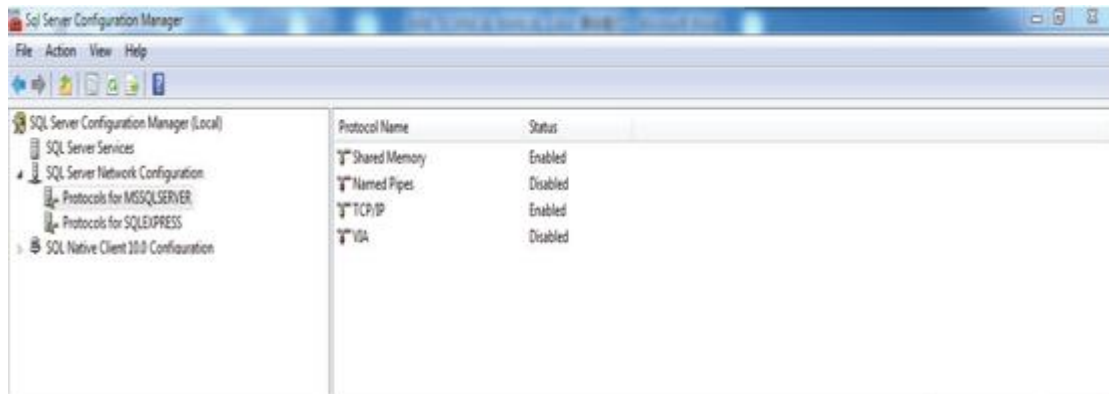
## Server and client - side operation configuration

### 1 Database operation

1.1 Open the SQL configuration manager in "Start" "All programs"

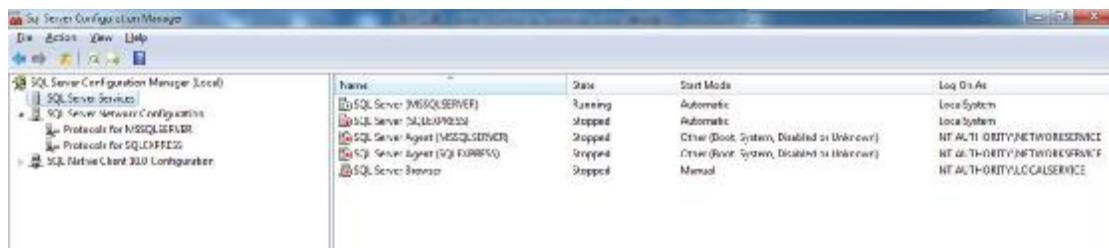


1.2 Operate TCP/IP in the SQL Service network configuration

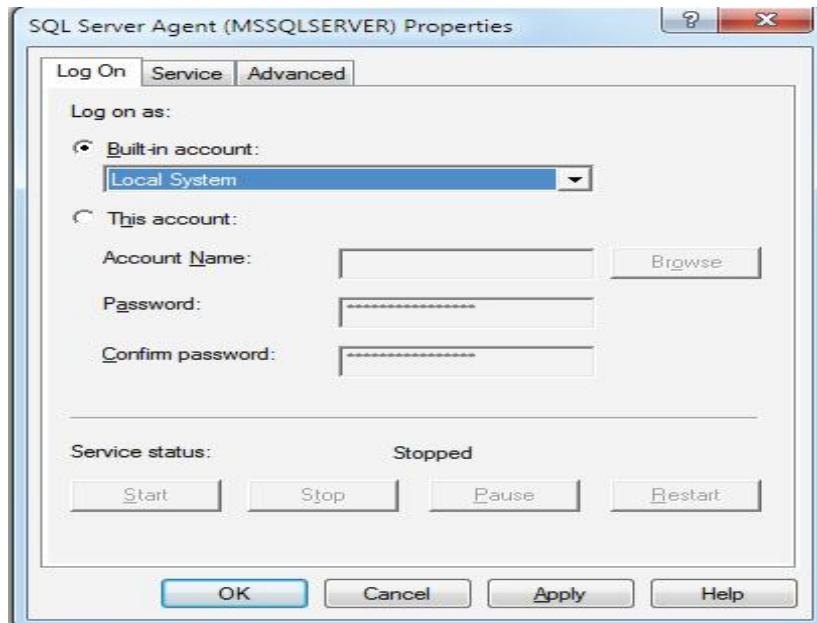


In the above figure set "TCP/IP" to be "Enabled".

1.3 Change SQL Server property

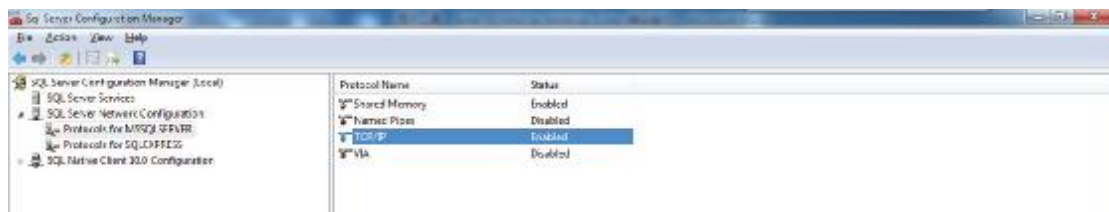


In the right of above, right-click the “SQL Server (MSSQLSERVER)”, and select the “Property”, and then display as the following:

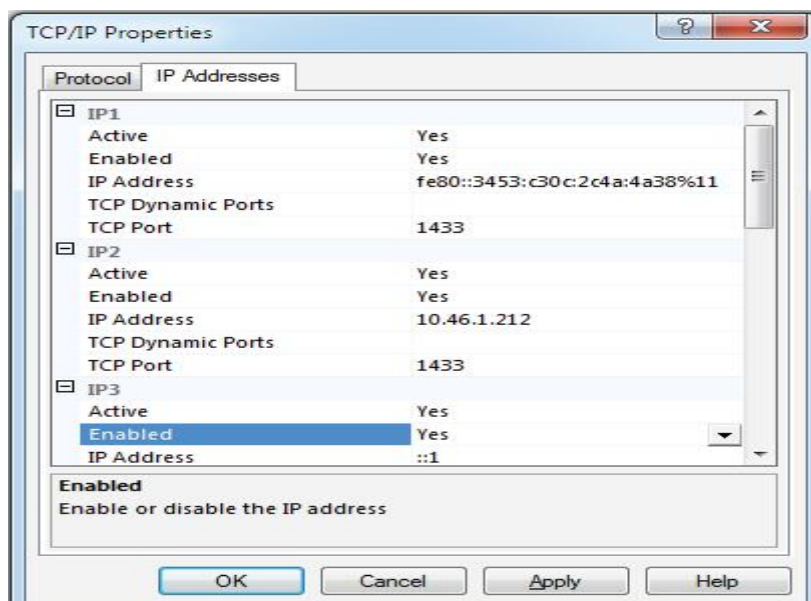


Choose “Built-in account” and select “Local System”, then click “OK” button.

#### 1.4 Open the connected IP address

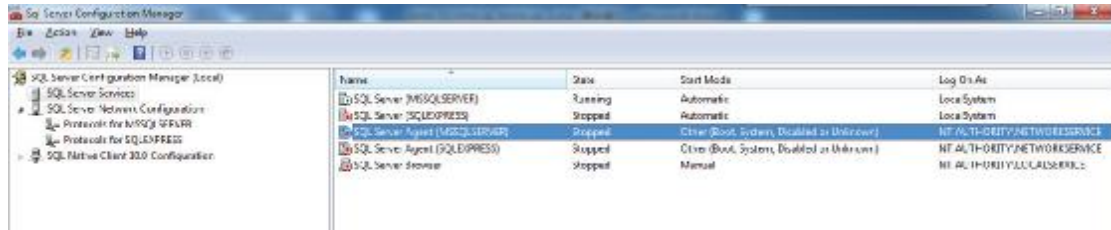


In the right of above, right-click the “TCP/IP”, and select the “Property”, and then display as the following:



Select the “IP Addresses” in the above, open the corresponding IP address. Change the “Enabled” to be Yes, and TCP Port to be 1433 (must open the 127.0.0.1 address). And then click the “OK” button.

### 1.5 Re-start the SQL Service server

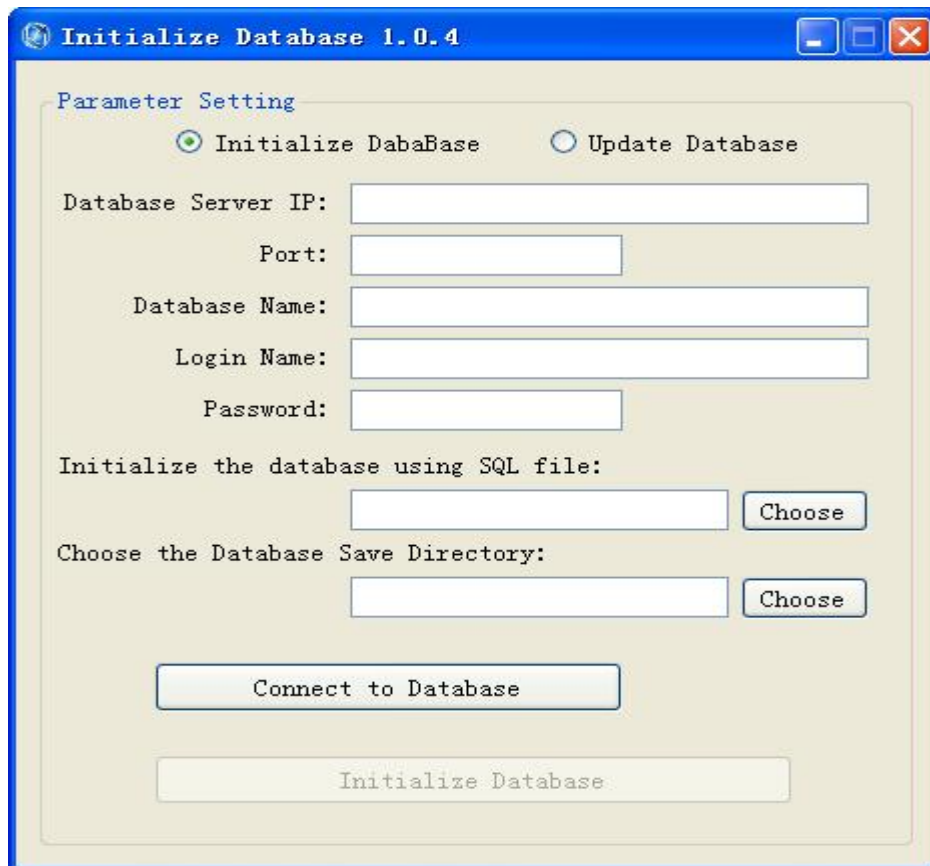


In the right of above, right-click the “SQL Server (MSSQLSERVER)” and select the “start/restart”, then re-start the server.

## 2 Database initialization

The purpose of database initialization is to create a ZG database in the database, and carry out the initialization operation. The operation steps as follow:

2.1 , Double-click InitializationDB.exe in the server software installation menu (E.g.: D:\Program Files\ZGServer), display as follow.



## 2.2 , Type in the initialization parameters



The screenshot shows a window titled "Initialize Database 1.0.4" with a "Parameter Setting" section. It contains two radio buttons: "Initialize DabaBase" (selected) and "Update Database". Below are input fields for "Database Server IP" (127.0.0.1), "Port" (1433), "Database Name" (ZG), "Login Name" (sa), and "Password" (masked with asterisks). There are two "Choose" buttons for selecting an SQL file and a save directory. At the bottom, there are two buttons: "Connect to Database" and "Initialize Database".

Parameter specifications:

Database Server IP : 127.0.0.1

Local default IP (confirm Enabled in address 127.0.0.1 of the forth step in 1 to be Yes )

Port: 1433

TCP/IP default port number: 1433

Database Name: ZG

To be created database name (create by this program, default is ZG)

Login Name: sa

Default user: sa

Password: \*\*\* sa password typed when installing the database: default zt12345678

Choose the Database Save Directory:

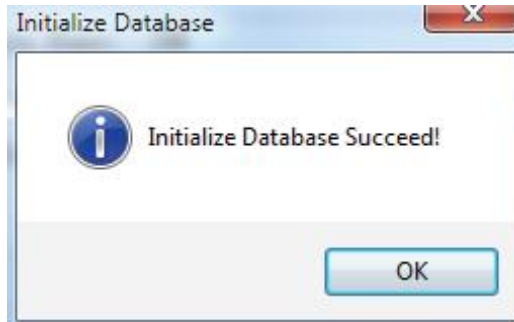
D:\ZGServer menu stored the database document, it's recommended to be none-system disk.

After finish the above parameters, click the "Connect to Database" button, if the button turns to be gray, and display "Connect Successfully", means connect the database successfully. Then can carry out the following operations.

3. Initialize the ZG database

Connect to the database successfully, the "Initialize Database" has been activated; click this

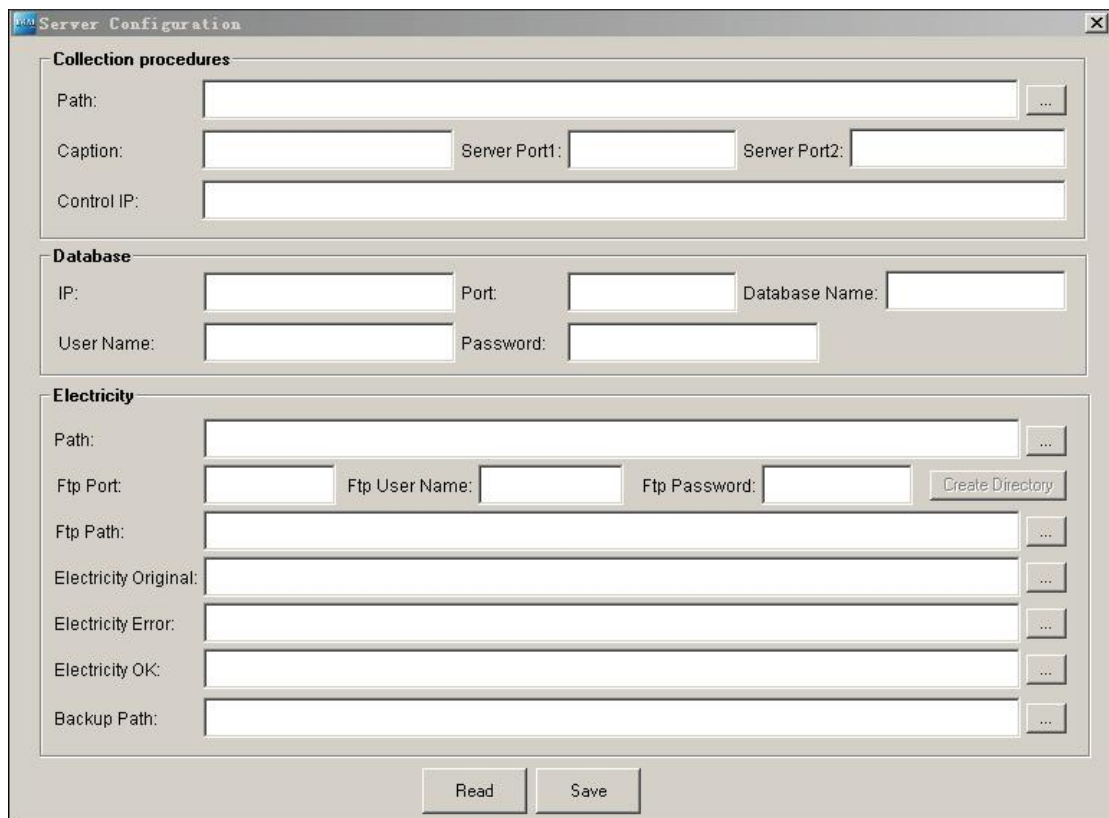
button to carry out initialization operation. If initialize database succeed, will display as the follow.



If initialization failed, please check whether has ZG sql document in the server installation menu (e.g.: D:\Program Files\ZGServer) and whether database has already in the ZG database.

### 3 Server operation configuration

Open the ServerSet.exe document under server installation menu (e.g.: D:\Program Files\ZGServer), display as follow:



Operation steps:

1. Click Path right button in the "Collection procedures", select the server installation menu, e.g.: this server installation menu: D:\Program Files\ZGServer
2. Click Path right button in the "Electricity", select the electricity analysis program installation

menu, e.g.: installation menu: D:\Program Files\ZGServer\EnergyFTP.

3. Click “Read” button, display as follow:

Type in Control IP (NCC gateway IP which needs to be searched), e.g.:

192.168.100.40; several IP should separate by English comma, make sure the form is right.

4. Select Ftp Path, Electricity Original, Electricity Error, Electricity OK path.

Selection method has 2 kinds:

**Server Configuration**

**Collection procedures**

Path: C:\Program Files\ZGServer

Caption: ZG Server Port1: 7700 Server Port2: 5500

Control IP: 192.168.100.1,192.168.100.40

**Database**

IP: 127.0.0.1 Port: 1433 Database Name: ZG

User Name: sa Password: z12345678

**Electricity**

Path: C:\Program Files\ZGServer\EnergyFTP

Ftp Port: 21 Ftp User Name: test Ftp Password: 123456 Create Directory

Ftp Path: C:\Program Files\ZGServer\EnergyFTP\Ftp

Electricity Original: C:\Program Files\ZGServer\EnergyFTP\Original

Electricity Error: C:\Program Files\ZGServer\EnergyFTP\Error

Electricity OK: C:\Program Files\ZGServer\EnergyFTP\OK

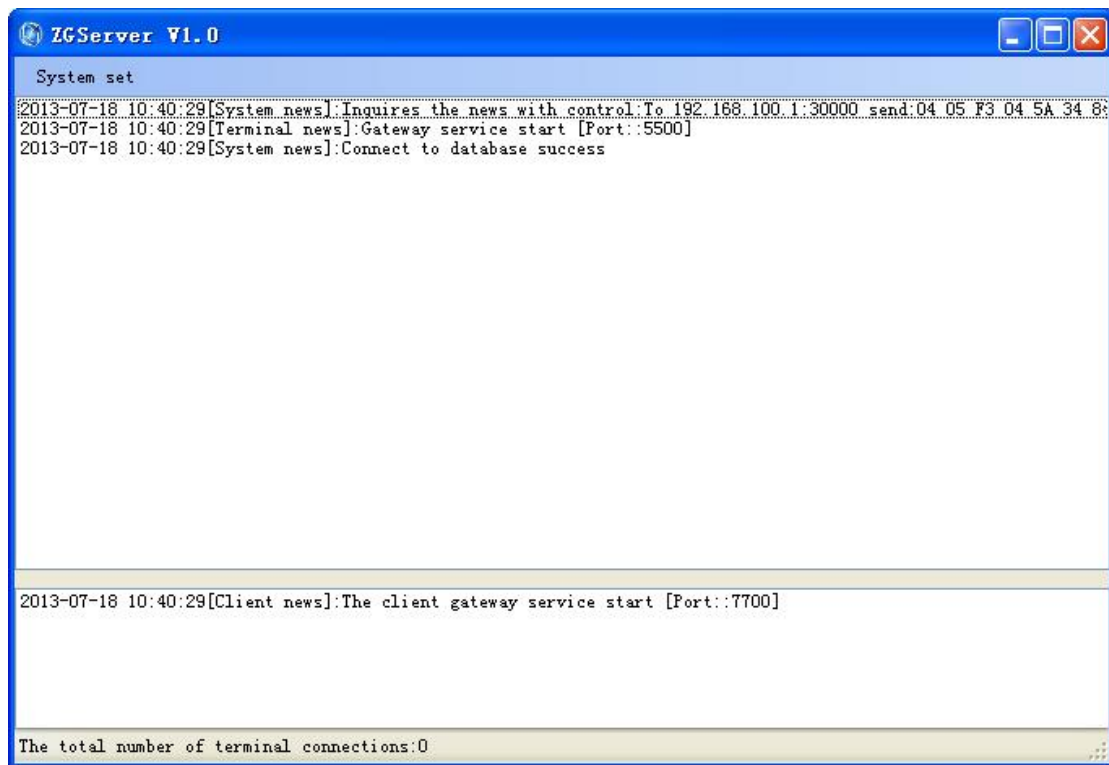
Backup Path: F:\CMV-NET\bak

Read Save

5. Click the right button of “Backup Path”, and select the backup document storage path. It’s recommended to be the same as the initialized database storage menu

6. Click the “Save”. Finish setting, and close the dialogue frame.

7. Finish configuration, double-click the “Server.exe” in the server software installation menu (make sure inserted dongle), and then create a show.txt document in this menu, and then will display a server operating interface, as follow:



```
System set
2013-07-18 10:40:29[System news]:Inquires the news with control:To 192.168.100.1:30000 send:04 05 F3 04 5A 34 8:
2013-07-18 10:40:29[Terminal news]:Gateway service start [Port::5500]
2013-07-18 10:40:29[System news]:Connect to database success

2013-07-18 10:40:29[Client news]:The client gateway service start [Port::7700]

The total number of terminal connections:0
```

Display "Connect to database success" means configure successfully.

Note: Change ServerSet configuration, the server should be re-started.

#### 8, Configure a network for Server with the same set of controller IP addresses

Open Protocol Properties dialog box, configure the IP address and subnet mask( through Advanced configuration), for example: IP: 192.168.100.5 (right figure),Subnet Mask: 255.255.255.0

IP addresses should not be the same with the NCC, and then click "OK" button after completing the configuration.

## 4 Client - side operation configuration



1, Double-click after start Client-side display as follow:

| Client-side Configuration |           |              |      |
|---------------------------|-----------|--------------|------|
| Server IP:                | 127.0.0.1 | Server port: | 7700 |
| Data port IP:             | 127.0.0.1 | Data port:   | 1433 |
| Ftp IP:                   | 127.0.0.1 | Ftp port:    | 21   |
| Select Language           | English   |              |      |
| Save                      |           |              |      |

Parameter specifications:

Server IP: Server IP address

Data port IP: Database IP address

Ftp IP: FTP server IP address (server IP address)



Server port: Default 7700, must be same with Server port1 of Server Configuration in 3.

Data port: Default 1433, generally cannot change.

Ftp port: Default 21, generally cannot change.

Select language: English/Chinese, change client-side interface language display.

Finish configuration, click "Save" button. Default these 3 IP to be the same.

2 , restart the Client -side,if  change to ,means Client -side connet to service. Now can login after key in user name and password.